

Hole width: 210MM  
Hole depth: > 133MM



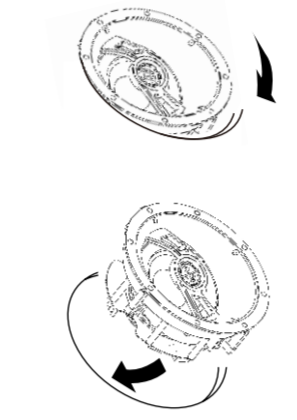
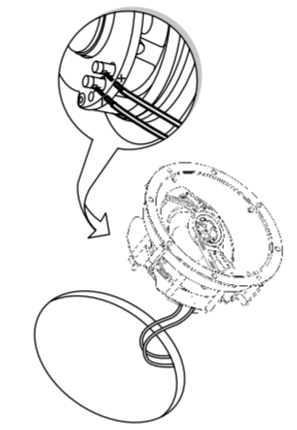
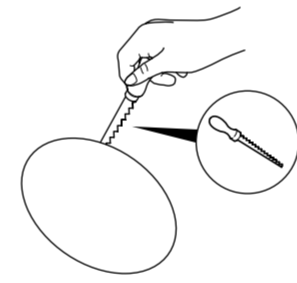
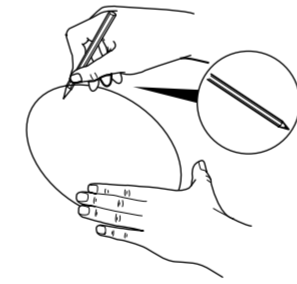
www.ztmspeakers.de  
SOLTON ACOUSTIC GMBH & CO. KG

C1650

PLEASE OPEN THE AREA ALONG THIS BLACK AREA

GEWERBERING 51.D-94060 POCKING GERMANY

IF YOU HAVE ANY QUESTIONS, PLEASE CONTACT YOUR LOCAL DEALER FOR YOUR SOLUTION



**STEP 1:**

Cut the cutout template along the dotted line and use a pencil to draw the cutout aid along the edge of the template.

**STEP 2:**

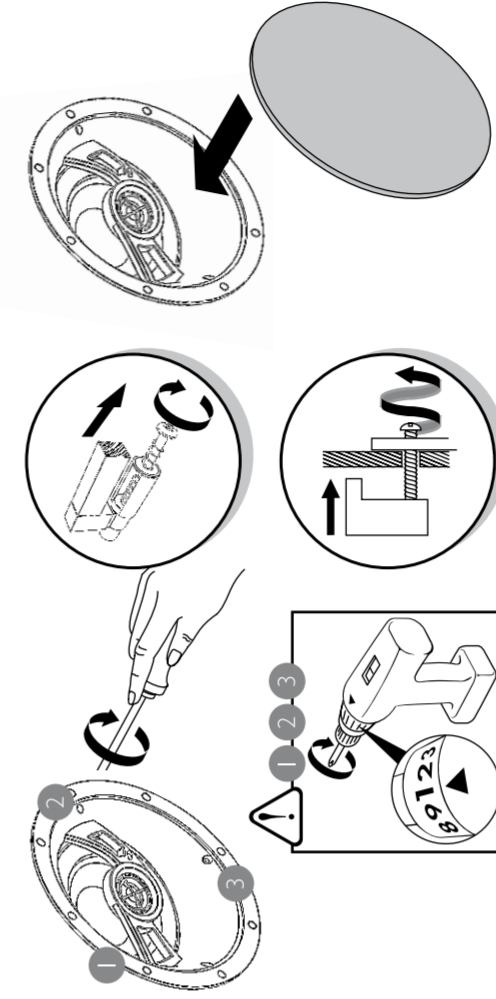
Speaker line connected to the rear speaker terminals, "positive then positive, negative then negative".

**STEP 3:**

Stabilize the speaker with both hands into the hole.

**STEP 4:**

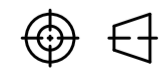
Use a screwdriver to tighten the screw clockwise to release the hand after testing firmly, then cover the net cover



Thank you for purchasing a new ZTM sound, it is important to make sure to install and connect the new sound. It is therefore advisable to read this manual and follow the instructions in the manual.

This manual not only explains in detail how the sound is installed. But also provides professional advice, so that your sound to achieve the best playback. ZTM Audio Each product is a combination of our high standards of sound requirements.

Please visit [www.ztmspeakers.de](http://www.ztmspeakers.de) for more information. I wish you happy!



Scale: %  
Unit: mm

Appendix: ISO-A series paper (mm)	
A4-297*210	A1-841*594
A3-420*297	A0-1189*841
<b>A2-594*420</b>	2A0-1682*1189

MATERIAL

DATE: 2017.5.1

VERSION V2.0

TITLE

**Hole size chart - C1650**



**SOLTON ACOUSTIC**

[www.ztmspeakers.de](http://www.ztmspeakers.de)

Gewerbering 51 • D-94060 Pocking • Germany  
SOLTON Acoustic GmbH & Co. KG